

CITY OF BURNABY

BYLAW NO. 13656

A BYLAW to close and remove the dedication of
a certain portion of highway

WHEREAS pursuant to section 40 of the *Community Charter* and section 120 of the *Land Title Act* the Council may by bylaw close part of a highway to traffic and remove the dedication of that part of the highway;

AND WHEREAS the Council, before adopting this Bylaw, has caused the required statutory public notice of its intention to be given by advertisement;

AND WHEREAS the Council deems it expedient and in the public interest to stop up and close to traffic and remove the dedication of that portion of highway more particularly hereinafter described;

NOW THEREFORE the Council of the City of Burnaby ENACTS as follows:

1. This Bylaw may be cited as **BURNABY HIGHWAY CLOSURE BYLAW NO. 2, 2016.**
2. ALL AND SINGULAR that certain parcel or tract of land, situate, lying and being in the City of Burnaby, in the Province of British Columbia, more particularly known and described as all that portion of road in District Lot 167, Group 1, New Westminster District, dedicated by Plan 18016, containing 0.365ha (hereinafter called "the closed portion of road") shown outlined on Reference Plan prepared by Gary Sundvick, B.C.L.S., and certified in the Land Title Office under Number EPP56893, a copy of which is hereunto annexed (hereinafter called "the plan") is hereby closed to all types of traffic.


3. The dedication of the closed portion of road as highway is removed.

Read a first time this 17th day of October 2016


Read a second time this 17th day of October 2016

Read a third time this 17th day of October 2016

Reconsidered and adopted this 21st day of November 2016



MAYOR



CLERK

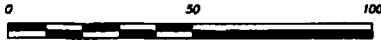


**REFERENCE PLAN TO ACCOMPANY CITY OF BURNABY BYLAW NUMBER 13656
TO REMOVE THE ROAD DEDICATION OF PART OF ROAD
DEDICATED ON PLAN 18016 DISTRICT LOT 167 GROUP 1
NEW WESTMINSTER DISTRICT**

PLAN EPP56893

PURSUANT TO SECTION 120 OF THE LAND TITLE ACT
PURSUANT TO SECTION 40 OF THE COMMUNITY CHARTER

BCGS 92G.028

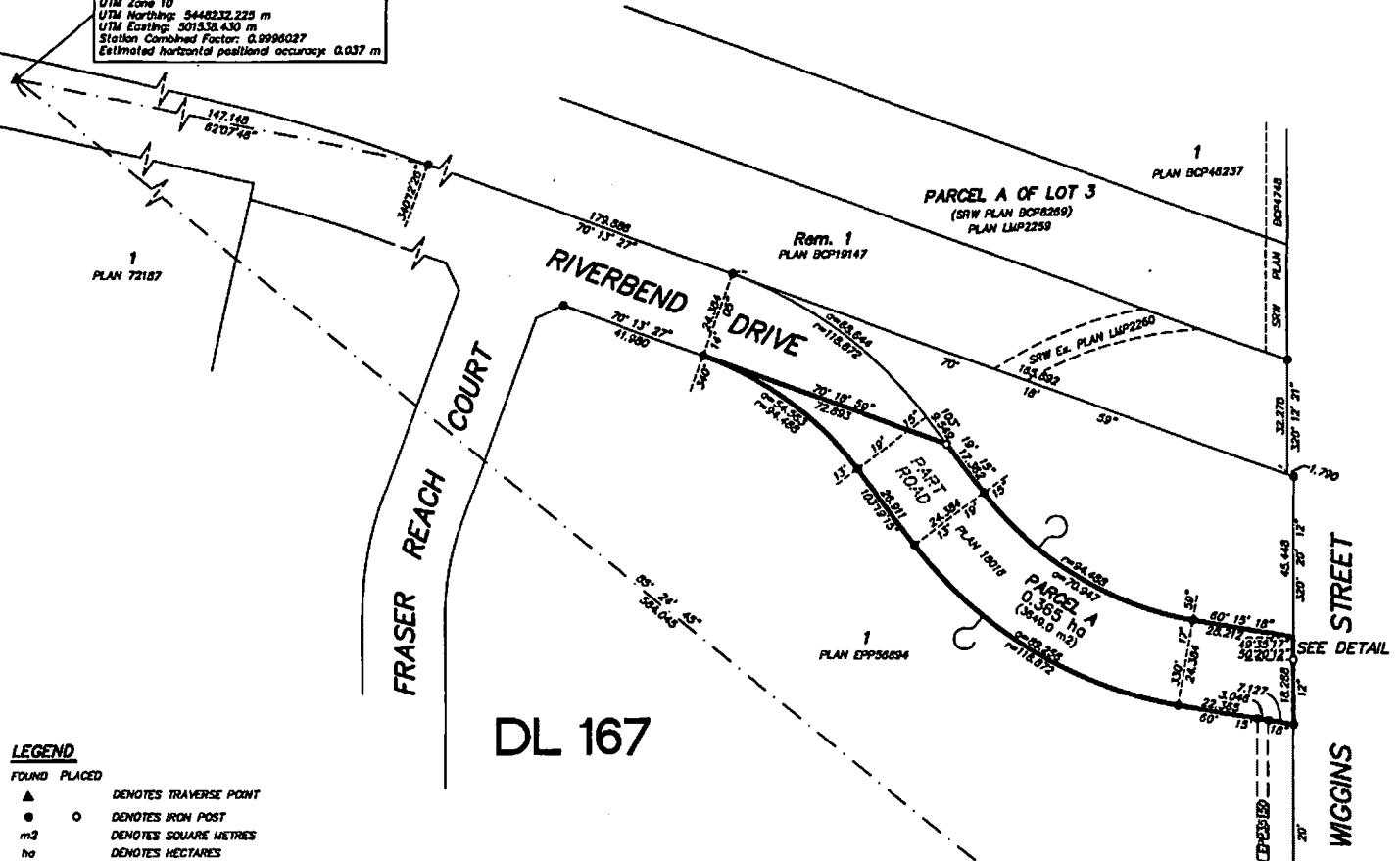


SCALE 1 : 1000 DISTANCES ARE IN METRES

THE INTENDED PLOT SCALE OF THIS PLAN IS 432 mm
IN WIDTH BY 560 mm IN HEIGHT (C SIZE) WHEN
PLOTTED AT A SCALE OF 1:1000.



CONCRETE NAIL #1
Datum: NAD83(CRS) 4.0.0.BC.1.GVRD
UTM Zone 10
UTM Northing: 5448232.235 m
UTM Easting: 501538.430 m
Station Combined Factor: 0.9990027
Estimated horizontal positional accuracy 0.037 m



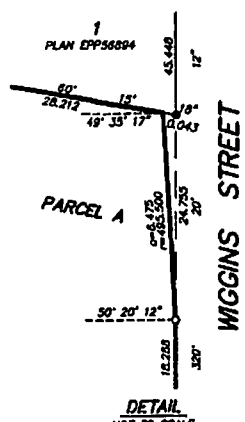
LEGEND

- FOUND PLACED
- ▲ DENOTES TRAVERSE POINT
 - ○ DENOTES IRON POST
 - m² DENOTES SQUARE METRES
 - ha DENOTES HECTARES

GRID BEARINGS ARE DERIVED FROM REAL TIME KINEMATIC GNSS BASELINE TIES TO THE BRITISH COLUMBIA ACTIVE CONTROL SYSTEM STATION BCSF AND ARE REFERRED TO CENTRAL MERIDIAN OF UTM ZONE 10.

THE UTM COORDINATES AND ESTIMATED HORIZONTAL POSITIONAL ACCURACY ACHIEVED ARE DERIVED FROM REAL TIME KINEMATIC GNSS BASELINE TIES TO THE BRITISH COLUMBIA ACTIVE CONTROL SYSTEM STATION BCSF.

THIS PLAN SHOWS HORIZONTAL GROUND-LEVEL DISTANCES, UNLESS OTHERWISE SPECIFIED, TO COMPUTE GRID DISTANCES, MULTIPLY GROUND-LEVEL DISTANCES BY THE AVERAGE COMBINED FACTOR OF 0.9990027. THE AVERAGE COMBINED FACTOR HAS BEEN DETERMINED BASED ON AN ELLIPSOIDAL ELEVATION OF -13.395 METRES.



THIS PLAN LIES WITHIN THE JURISDICTION OF THE APPROVING OFFICER FOR THE CITY OF BURNABY.

THE FIELD SURVEY REPRESENTED BY THIS PLAN WAS COMPLETED ON THE 11th DAY OF OCTOBER, 2016
GARY SUNDVICK, B.C.S. (637)
BCR# 191990

CONCRETE NAIL #2
Datum: NAD83(CRS) 4.0.0.BC.1.GVRD
UTM Zone 10
UTM Northing: 5448278.918 m
UTM Easting: 502120.371 m
Station Combined Factor: 0.9990027
Estimated horizontal positional accuracy 0.038 m

G.1

BUTLER SUNDVICK
4 - 10080 94th Ave
Surrey, BC V4N 3S4
www.butlersundvick.ca
Tel. 604-513-9811
F#1: 4292
D#1: 4292-R01

THIS PLAN LIES WITHIN THE GREATER VANCOUVER REGIONAL DISTRICT