

CITY OF BURNABY

BYLAW NO. 14704

A BYLAW to close and remove the dedication of
a certain portion of highway

WHEREAS pursuant to section 40 of the *Community Charter* and section 120 of the *Land Title Act*, Council may by bylaw close part of a highway to traffic and remove the dedication of that part of the highway;

AND WHEREAS Council, before adopting this Bylaw, has caused the required statutory public notice of its intention to be given by advertisement;

AND WHEREAS Council deems it expedient and in the public interest to stop up and close to traffic and remove the dedication of that portion of highway more particularly hereinafter described,

NOW THEREFORE the Council of the City of Burnaby ENACTS as follows:

1. This Bylaw may be cited as **BURNABY HIGHWAY CLOSURE BYLAW NO. 6, 2024.**
2. ALL AND SINGULAR those certain parcels or tracts of land, situate, lying and being in the City of Burnaby, in the Province of British Columbia, more particularly known and described as those portions of lane dedicated by Plans 1891 and 1892 in District Lot 80, Group 1, New Westminster District containing 562.8m² and 306.9m² shown as Parcel “A” and Parcel “B”, respectively, and outlined in bold on Reference Plan EPP141452 (hereinafter called “the closed portions of road”), prepared by Andrew Rutherford, B.C.L.S., a copy of which is hereunto annexed, is hereby closed to all types of traffic.

3. The dedication of the closed portions of road as highway are removed.

Read a first time this 18th day of November, 2024

Read a second time this 18th day of November, 2024

Read a third time this 18th day of November, 2024

Public Notice Dates this 21st day of November, 2024 and 28th day of November, 2024

Reconsidered and adopted this 2nd day of December, 2024

MAYOR

CORPORATE OFFICER

Signed Original Bylaw on file.

REFERENCE PLAN TO ACCOMPANY THE CITY OF BURNABY
BYLAW NO. 14704 TO REMOVE THE ROAD DEDICATION OF
PORTIONS OF ROAD DEDICATED ON PLANS 1891 AND 1892,
DL 80, GROUP 1, NWD.

Pursuant to Section 120 of the Land Title Act and
Section 40 of the Community Charter

BCGS 92G.026

City of Burnaby

The intended plot size of this plan is 560mm in
width by 432mm in height (C Size) when plotted
at a scale of 1:750

Scale 1 : 750

All distances are in metres and decimals thereof.

Integrated Survey Area No. 25,
Burnaby, NAD83 (CSRS) 4.0.0.BC.1.GVRD

Legend.

- denotes standard iron post found
- denotes standard iron post set
- NTS denotes not to scale
- ⊙ denotes unknown origin
- ⊕ denotes control monument
- ▲ denotes lead plug found
- denotes GNSS Control hub
- NSP denotes not suitable for posting

Grid bearings are derived from differential dual
frequency GNSS observations and are referred
to the central meridian of UTM Zone 10
(123° West Longitude).

This plan shows horizontal ground level distances
unless otherwise specified.
To compute grid distances, multiply ground-level
distances by the average combined factor of
0.9999526. The average combined factor has
been determined by a mean ellipsoidal
elevation of 47.287 metres.

The UTM coordinates and estimated absolute
accuracy achieved are derived from dual
frequency GNSS observations to
Vancouver City Firehall ACP (CGM No.875864).

The coordinates listed are for mapping purposes
only, and should not be used to determine
property boundaries.

Some posts and lines have been exaggerated for clarity.

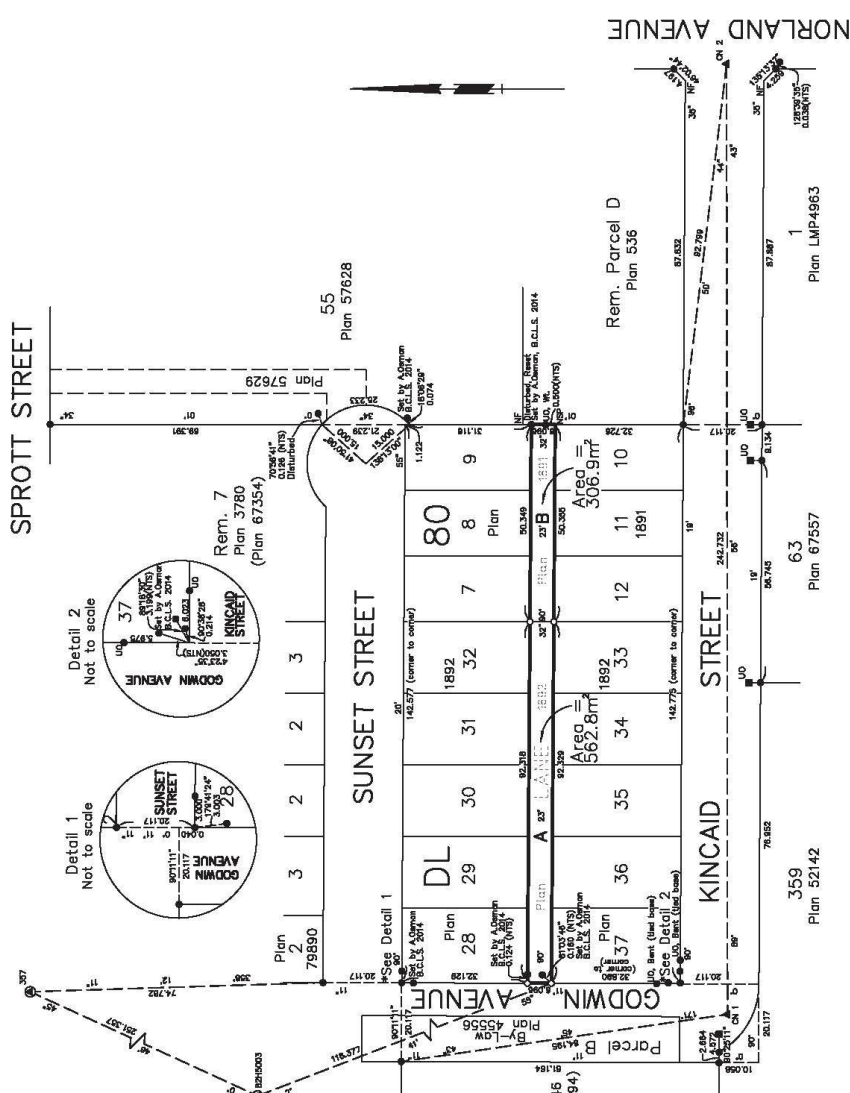
NAD83 (CSRS) 4.0.0.BC.1.GVRD UTM ZONE 10 COORDINATES			
CONTROL POINT	ABSOLUTE ACCURACY		
NORTHING	EASTING		
CN 1	5455080.807	501589.875	0.05
CN 2	5455081.038	501832.507	0.05

The City of Burnaby
Engineering Dept. Survey Section
10000 Burnaby Rd., Burnaby, B.C.
V5B 1M2
Phone: (604) 294-7463
Fax: (604) 294-7462

Fig. 240714_A400R01e_U:\Burnaby\2024\Work\40714_Urban\40714_BredSource.dwg

PLAN EPP141452

SPROTT STREET



The field survey represented by this plan was
completed on the 31st day of October, 2024.
Andrew Rutherford, BCL #1079

This plan lies within the Metro Vancouver Regional District